

Enige Toekomst Perspectieven voor de Land Administratie en Geo-Informatievoorziening in Suriname

Universiteit van Suriname
Paramaribo
14 Juni 2016

Christiaan Lemmen
Krieshen Ramkhelawan
Mathilde Molendijk, Paul Saers, Richard Metz



Agenda

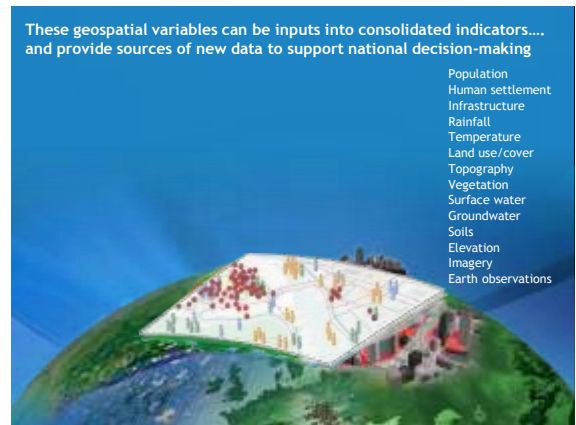
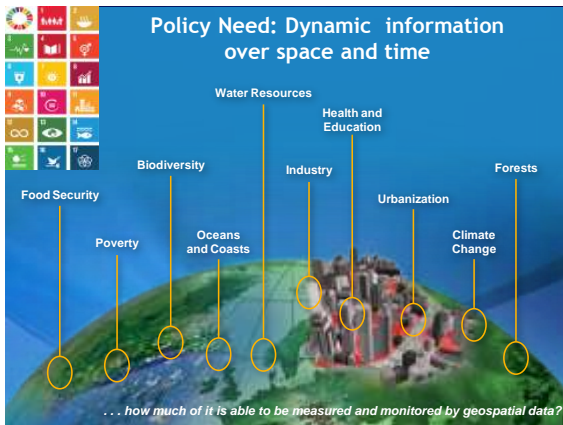
- Sustainable Development Goals
- Spatial Data Infrastructure
- Land Administration
- Termijn Perspectieven



Agenda



- Sustainable Development Goals
- **Spatial Data Infrastructure**
- Land Administration
- Termijn Perspectieven



Transforming our World: The 2030 Agenda for Sustainable Development



Follow up and review:

76. We will support developing countries, particularly African countries, LDCs, SIDS and LLDCs, in strengthening the capacity of national statistical offices and data systems to ensure access to high quality, timely, reliable and disaggregated data. We will promote transparent and accountable scaling-up of appropriate public-private cooperation to exploit the contribution to be made by a wide range of data, *including earth observation and geospatial information*, while ensuring national ownership in supporting and tracking progress.



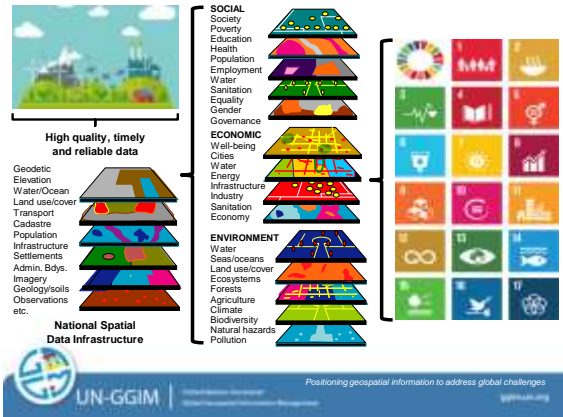
Transforming our World: The 2030 Agenda for Sustainable Development



Data, monitoring and accountability:

17.18 By 2020, enhance capacity-building support to developing countries, including for least developed countries and small island developing States, to increase significantly the availability of high-quality, timely and reliable data disaggregated by income, gender, age, race, ethnicity, migratory status, disability, *geographic location* and other characteristics relevant in national contexts.





Agenda

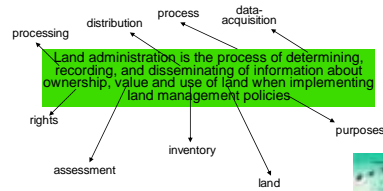
- Sustainable Development Goals
- Spatial Data Infrastructure
- **Land Administration**
- Termijn Perspectieven



WHAT IS LAND ADMINISTRATION?



- 1.1 By 2030, eradicate extreme poverty for all people everywhere, currently measured as people living on less than \$1.25 a day
- 1.4 By 2030, ensure that **all men and women**, in particular the poor and the vulnerable, **have equal rights** to economic resources, as well as access to basic services, **ownership and control over land and other forms of property**, inheritance, natural resources, appropriate new technology and financial services, including microfinance



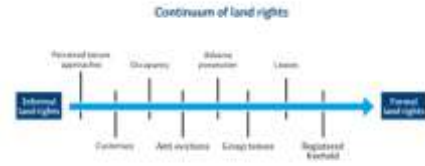
Challenges in Land Administration

- 70% to be done
- Complex institutional setting
- Transparency
- Automation
- Trend: decentralisation

70%

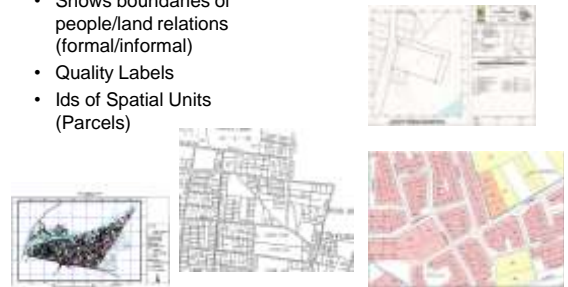
APPLICATIONS OF LAND INFORMATION

- Implementation of land policy
- Land reform
- Certainty of ownership
- Social justice
- Legal certainty
- Land market
- Public services
- Taxation
- Reduction of dispute
- Access to credit
- Development and use of land
- Resource management
- Environmental protection
- Improved conveyancing
- Information infrastructure



Cadastral map

- Shows boundaries of people/land relations (formal/informal)
- Quality Labels
- Ids of Spatial Units (Parcels)



Fit-For-Purpose

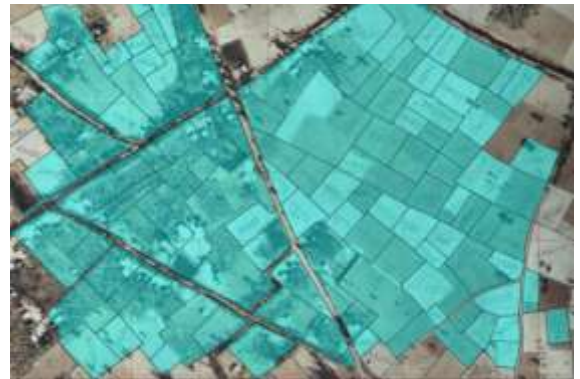
- Ethiopia
- Rwanda
- Colombia

Ethiopia

Aerial imageries for participatory field adjudication



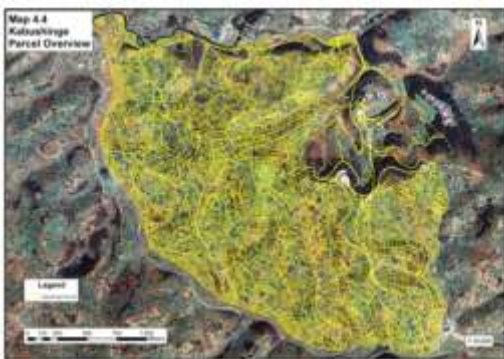
Source: Zerfu Hailu, Ethiopia



Source: Zerfu Hailu, Ethiopia

Rwanda





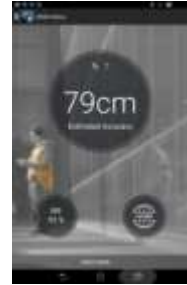
Colombia





Accuracy

- Value of the land
- Allowed differences



Compare

- | Alternative 1 | Alternative 2 |
|---------------------|-----------------|
| • 100 years | • 10 years |
| • High Costs | • Low Costs |
| • Technology driven | • Demand driven |
| • By Government | • By Citizens |
| • Rigid | • Transparent |

Agenda

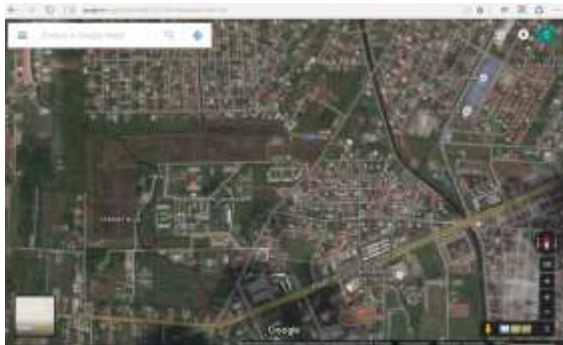
- Sustainable Development Goals
- Spatial Data Infrastructure
- Land Administration
- **Termijn Perspectieven**

Volledig Digitale Land Administratie

- Landsdekkend Digitaal
- Unieke perceel nummers
- Koppeling kaart/registers

Basiskaart

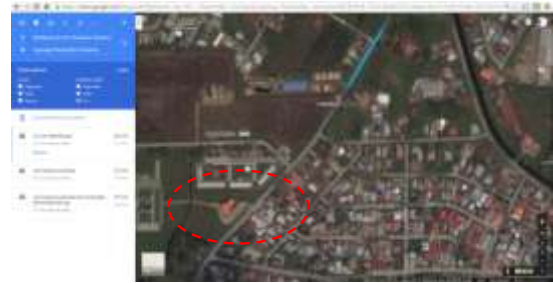
- Referentie stelsel
- Imagery
- Inhoud flexibel – afhankelijk van de vraag
- Crowdsourcing
- Eenvoudig toegankelijk



Geo Locators

- Kavel nummers
- Perceelnummers
- Perceel_id
- StraatRegisterNummer
- Kadastrale Omschrijving
- Adres





Healthcare

Resultaten

ZIKA events per ressort



Disclaimer: het MI-GLIS weergeeft de data op een kaart en geeft niet de interpretatie daarvan.

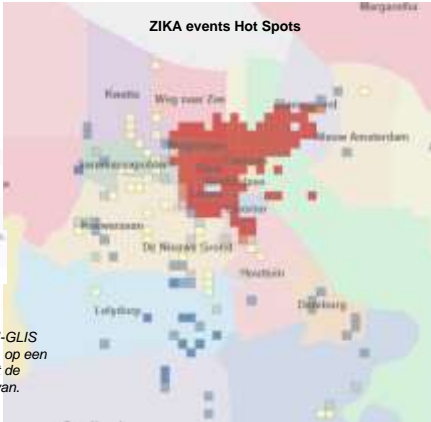


Web app



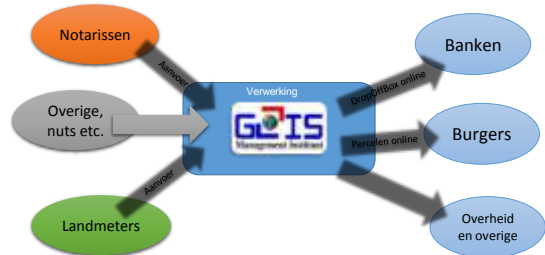
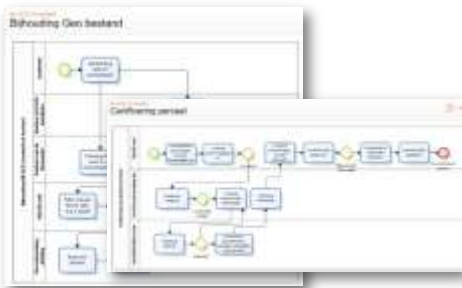
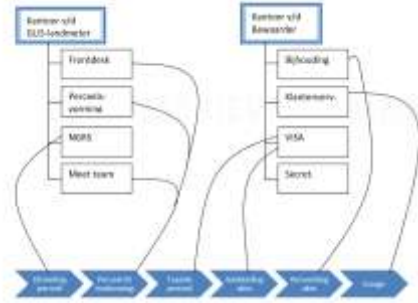
Disclaimer: het MI-GLIS weergeeft de data op een kaart en geeft niet de interpretatie daarvan.





Disclaimer: het MI-GLIS weergeeft de data op een kaart en geeft niet de interpretatie daarvan.

Werkstromen



Conclusions

www.gli.nl Status en perceelgegevens geactualiseerd	Ingebruik in het Geometrisch systeem	Perceel is ge- geografiseerd	Unieke Operatie Registratie's Perceel ID.	Bijhouding in Perceel- bestand
Staten A	✓	✓	✓	✓
Staten B	✓	✓		
Staten C	✓			
Staten D	✓			

UN GGIM: Integration of worlds



Conclusies

- Meer Samenwerking
- Meer ICT
- Meer Geo-Informatie