



# Spatial Data NSO Suriname

Presenter:  
Ms. Naomi Caupain

*Paramaribo, December 5<sup>th</sup> 2018*  
*GLIS workshop: Geospatial Framework for Suriname*

# Scope of the presentation

## *Introduction*

- General info about the Statistics Office
- Sort of Spatial Data used at the GBS

## *Main Topics*

- Use and collection of Spatial Data
- Combine / use Spatial Data of third parties

## *Closing*

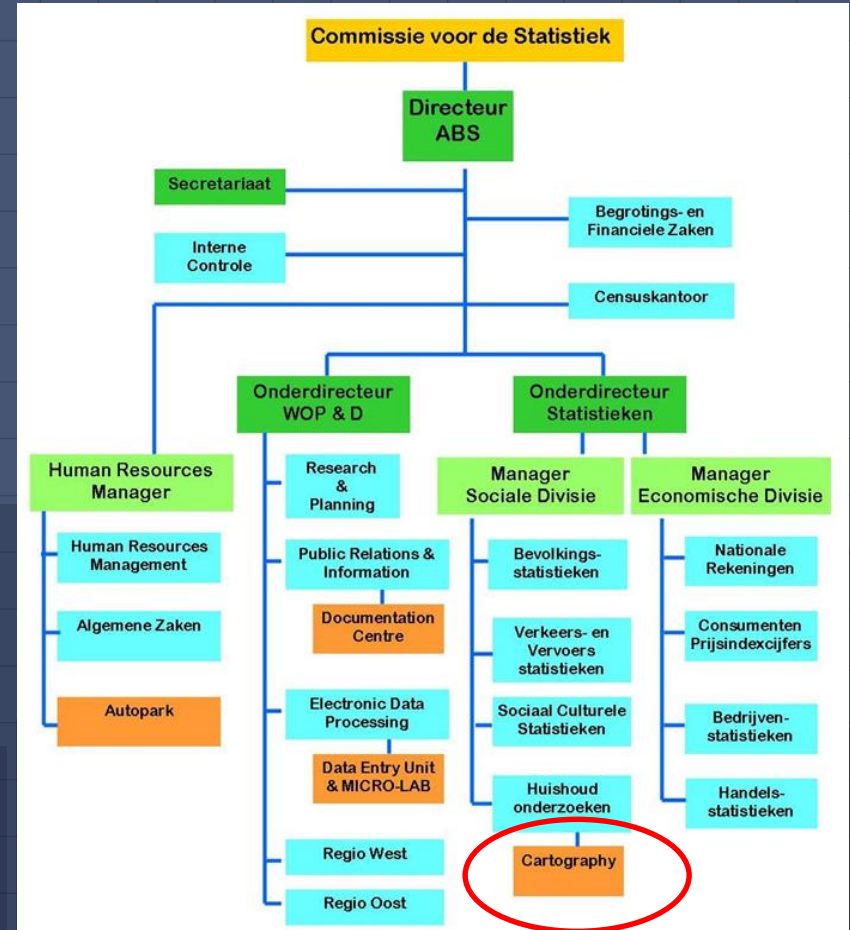
- Methods of sharing of Spatial Data
- Bottlenecks
- Next steps regarding Spatial Data

# Introduction



The GBS is a semi-autonomous government organization, under the jurisdiction of the Ministry of Finance.

Within the GBS, the department that is mostly responsible for Spatial Data matters is the Cartography Unit, which falls under the section of Household Surveys.



# Sort of Spatial Data used at the GBS

Spatial Data used by / within the GBS is regarding Geographical information about the following items:

- National (official country) borders
- Official District borders (Decree G17, 1983)
- Official sub-district borders (ressorten) (Decree A26, 1987)
- Streets (road map information)
- Rivers
- Buildings
- Enumeration Blocks

## ONDERZOEKSGEBIEDKART



Legend

— STRAAT

ONDERZOEKSGEBIED

= GEBOUW



Getekend door: Moennoe



Main topic

2



# Main Topic: Collection and Use of Spatial Data

## Collection of Spatial Data:

- First input is the Basic Country Map (derived from GISSAT).
- The Cartography Unit is continuously updating the Geographical Map information using GPS recordings, Satellite images (Bing Map Aerial) and information gathered during Field Inspections.
- Now the GBS map is based on the Bing Mapping Satellite Images.

# Main Topic:

## Collection and Use of Spatial Data

### Use of Spatial Data:

- Use of Coordinate System: WGS\_1984\_UTM\_ZONE\_21N
- Use of ArcMap 10.5
- Producing fieldwork maps
- Technical support in fieldwork matters regarding locating sampled addresses etc.
- Verifying (requested/produced) survey samples within the general Cartography database
- Overall: general support with all surveys in execution

# Main topic: Combine / use spatial data of third parties

Momentarily this is not being done.  
If needed, it will be discussed in the future.



# Closing

A large, light blue number 3 is positioned on the right side of the slide. The background is a dark blue grid with a bar chart at the bottom. The bar chart consists of numerous vertical bars of varying heights, creating a textured, data-like appearance. The number 3 is rendered in a clean, sans-serif font, standing out prominently against the darker background.

3

# Closing

## Methods of Sharing:

Produce fieldwork maps for sample surveys of third parties. Only street names and boundaries of enumeration blocks are identifiable.

## Bottlenecks:

Ownership matters

Disclosure Prevention Policy (in case of data sharing)

# Closing

## Next steps regarding Spatial Data

- Continuous process of updating Cartography Geographical Database
- Preparations for Census round 2020 (listings, splitting up of "too large" enumeration blocks, production of Maps etc.)
- Work on getting access to more recent satellite images

# Thank you!

The background consists of a dark blue grid. Overlaid on this grid is a light blue line graph with circular markers at each data point, showing an overall upward trend with some fluctuations. Below the line graph, there is a faint bar chart with vertical bars of varying heights, also in a light blue color.